

Axles

for Electric Counterbalance Trucks and Ground Support Equipment

Applications

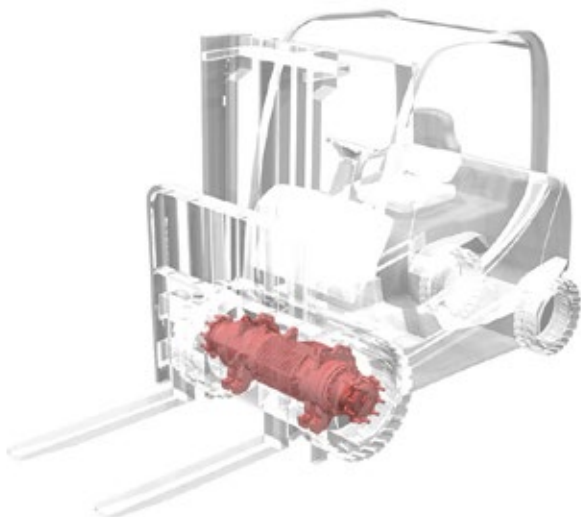
- › 4 wheel Electric CB Lift Trucks
- › Ground Support Equipment
- › Airport Tractors

Standard features

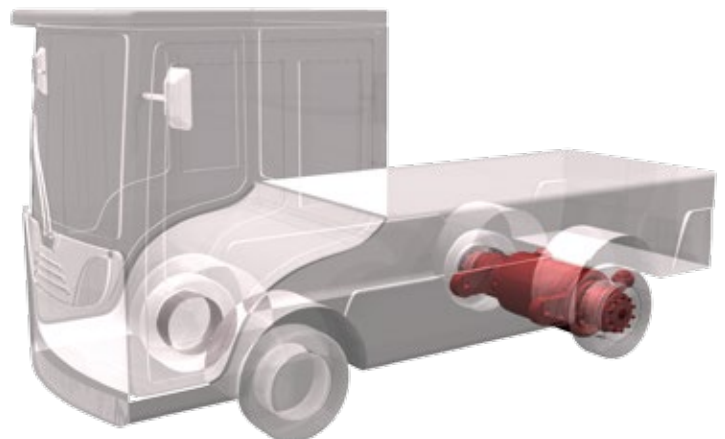
- › Dual planetary gear box
- › Wet Disc Brakes
- › Easy to service
- › Optimized installation envelope
- › Maintenance free
- › Optimized gears profile for noise reduction
- › Integrated mast support
- › Integrated AC traction motor

Optional features

- › Mechanical actuation by lever of service brake



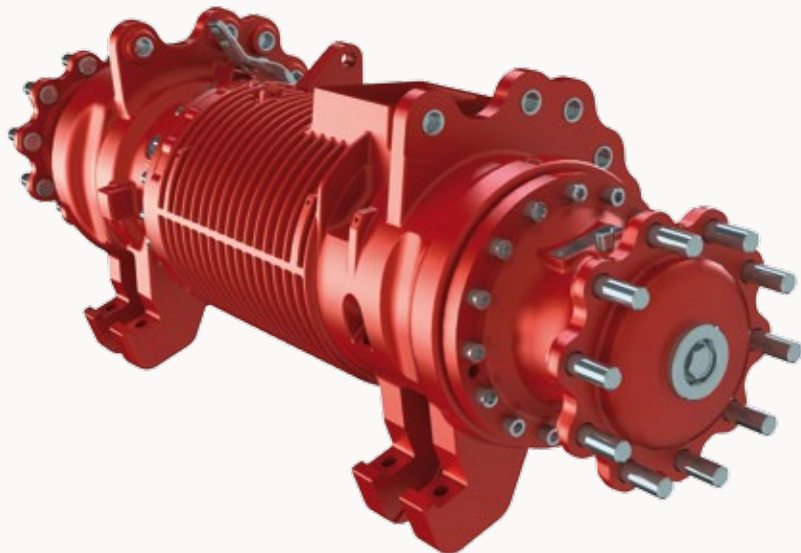
Class I



Class VI/Electric

CLASS I – CLASS VI/E

		EC 30 GSE	EC 35	EC 50
Applications		GSE	CB Forklifts	CB Forklifts
Trailer weight	Kg	25,000	-	-
Lift capacity	Kg	-	3,500	5,000
Wheels load	Kg	5,000	8,800	12,000
Torque at wheels	Nm	5,600	8,200	9,600
Ratios		14.5-20.2	14.5-29.2	18.2-29.2
AC motor power	Kw	5/20	15	15/18
Service and Parking Brakes		Wet Disc	Wet Disc	Wet Disc
Flange to flange distance	mm	1,075	1,085	1,155
Frame mounting	mm	610	640	640
Mast mounting	mm	-	570	650
Wheel stud PDC	mm	170	160	225



Axles

for Electric Counterbalance Trucks and Ground Support Equipment

Applications

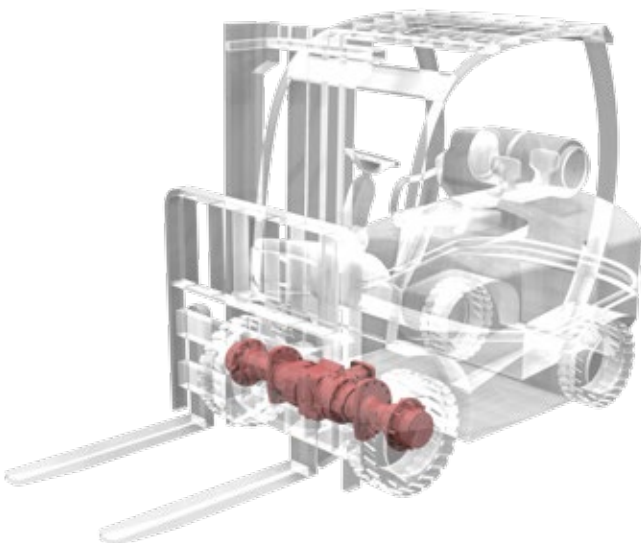
- › 4 wheel Electric CB Lift Trucks

Standard features

- › Bevel set gear concept
- › Wet Disc Brakes
- › Spring applied hydraulic release parking brake
- › Optimized installation envelope
- › Maintenance free
- › Optimized gears profile for noise reduction
- › Integrated mast support

Optional features

- › Wide range of reduction ratio available
- › Transfer box



Class I

CLASS I – CLASS VI/E

EC 90

Lift capacity	Kg	9,000
Wheels load	Kg	136,000
Torque at wheels	Nm	25,000
Axle ratios		10.7-27.6
AC motor power	kW	27
Service and Parking brakes		Wet Disc
Transmission type		Carraro Transfer Box
Transmission ratio		1.2-3.2
Flange to flange distance	mm	1,250 1,450
Frame mounting	mm	Customized
Mast mounting	mm	Customized
Wheel stud PDC	mm	275

